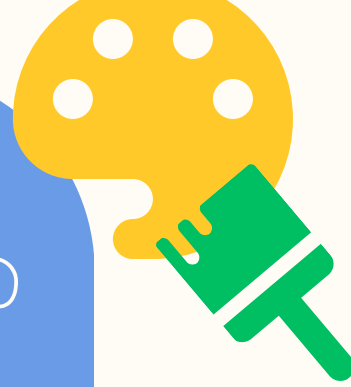




PETERSFIELD
INFANT
SCHOOL

WRAP
AROUND
CARE



We are delighted to be able to offer families **Wrap Around Care** from September 2024. The club will be run by **school staff** who are known to the children and who are trained to a very high standard in **safeguarding** and **health and wellbeing**.

Our staff know how to keep children entertained, busy, stimulated and focused whilst also maintaining high levels of behaviour. Wrap Around Care will be run under the same policies and procedures as the school.

MORNING SESSION

Club opens at 7:30am
Children escorted to school for
8:40am start.
Breakfast will include cereal, toast
and fruit juice
Cost: £5 per session

AFTER SCHOOL

Club runs from 3:10pm - 5pm OR 6pm
Healthy varied tea provided which
contains foods such as: rolls, ham,
cheese, yoghurts, fruit, vegetables,
breadsticks, rice cakes, hummus, juice
and occasional biscuits or crisps. Teas
will be well planned to ensure
nutritional balance.
£8.50 - 5pm finish
£12.00 - 6pm finish

WHAT WILL BE ON OFFER FOR THE CHILDREN

Sports, games, craft activities, gardening, cooking, music making, coding and the occasional use of a Wii games console, some down time TV and ending the week will be Film Club Friday with a movie and popcorn.

Our aim is to create a homely environment where children can enjoy the downtime they need after a busy day at school, whilst also providing a wide range of fun, engaging activities keeping them entertained and wanting to come back for more.



We are currently exploring an **online booking system** to enable efficient booking. Further details will be sent out ASAP.

To **assist our planning**, your input would be hugely appreciated. If you're interested in making use of our Wrap Around Care provision from September 2024, **please email the office with your requirements.**

adminoffice@petersfield-inf.hants.sch.uk

Please include days of the week and sessions you may require.

MANAGEMENT

Mrs Proudfoot is our new Wrap Around Care **Manager** and will be spending dedicated time planning and organising the club on a daily basis.

CONTACT

We are looking at direct communication means to contact the club without going through the school office; these details will be made available ASAP.

THANK YOU FOR YOUR SUPPORT

All profit generated by our new facility will be fed directly back into the school budget. As we are sure you're aware, school budgets are getting increasingly tighter so any extra funds will be directly enhancing the provision we are able to offer our children at school.